

INTERAGENCY COLLABORATION

Bill Wetter, M.S./EMT-P
Preparedness Manager

*LOUISVILLE (KY) METRO
HEALTH DEPARTMENT*





Integrated Approach to Community Response

- What Does It Mean?
- Who Is Involved?



Webster defines Integrate as: "to make whole by bringing all of the parts together".





TEAMWORK

None of us is as
smart as all of us . . .

Ken Blanchard

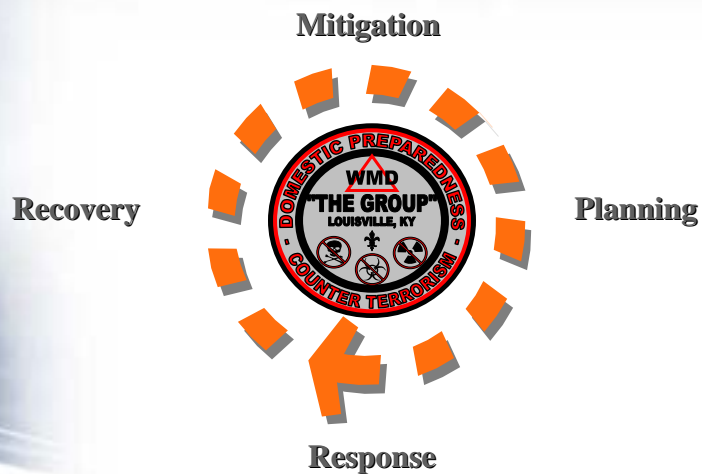
Check your ego at the door !!!

K.D. Lane

What Is An Integrated Approach?

- So what we are looking for is a system or plan that will bring together all of the Emergency Response Community.
- The Emergency Response Community includes agencies that play a role in one or more of the 4 phases of the “Emergency Response Cycle”

The Emergency Response Cycle





Mitigation

Includes any activity that:

- Prevents a disaster,
- Reduces the chance of a disaster happening,
- Or reduces the damaging effects of an unavoidable disaster.



Preparedness

- Includes Plans and Preparations made to save lives,
- Protect the community,
- Facilitate response and recovery,
- Provides for common community goals.

Response

- Includes actions taken to:
- Save lives,
- Prevent further damage to property and the environment.
- Who is missing?





Recovery

Includes actions taken to:

- Return the situation to normal, or
- Even a safer or better situation.



Why an Integrated Approach?

- No single agency has all of the expertise to effectively handle all phases of the Response Cycle.
- Each agency has its own area of expertise. So let each agency do what it does best.
- Don't waste valuable resources.
- Avoid duplication of effort and equipment don't try to keep up with the Jones.
- If you can get it through Mutual Aide it is almost as good as having your own.

Joint Entry LMPD, FBI & LMFD



Disadvantages of Integrated Approach



- The system is only as strong as it's weakest link (agency).

“DON’T PUT ALL YOUR EGGS IN ONE BASKET”, OR AGENCY.



- If you are planning on one agency to do it all—You are planning for failure.
- Each agency has it's strengths and weaknesses.

Communities Must

***Plan**

***Train**

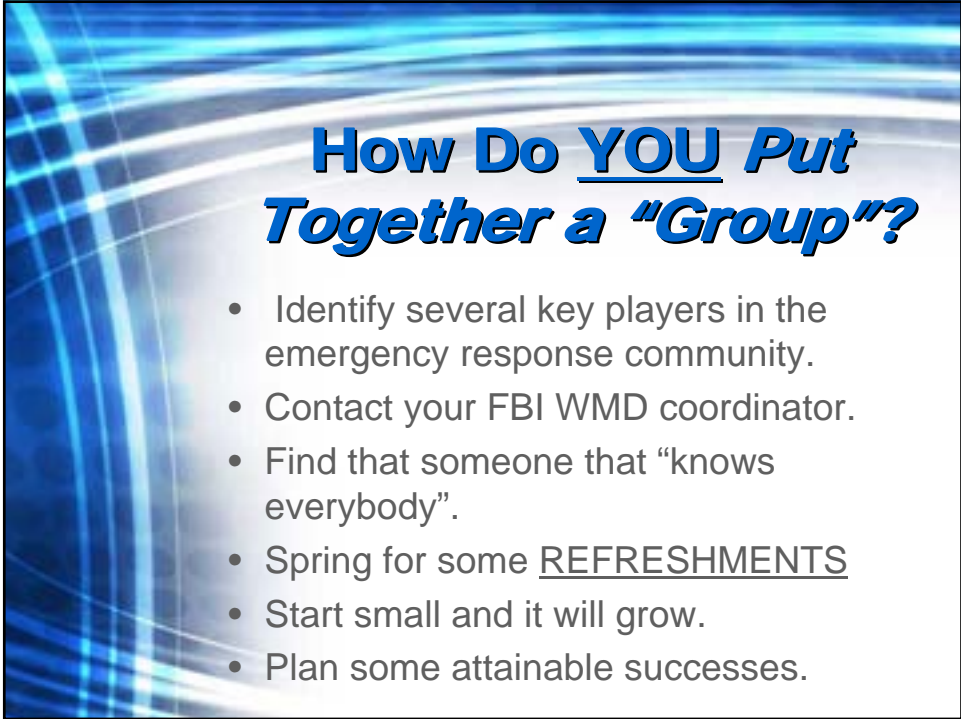
***Exercise**

***Evaluate**



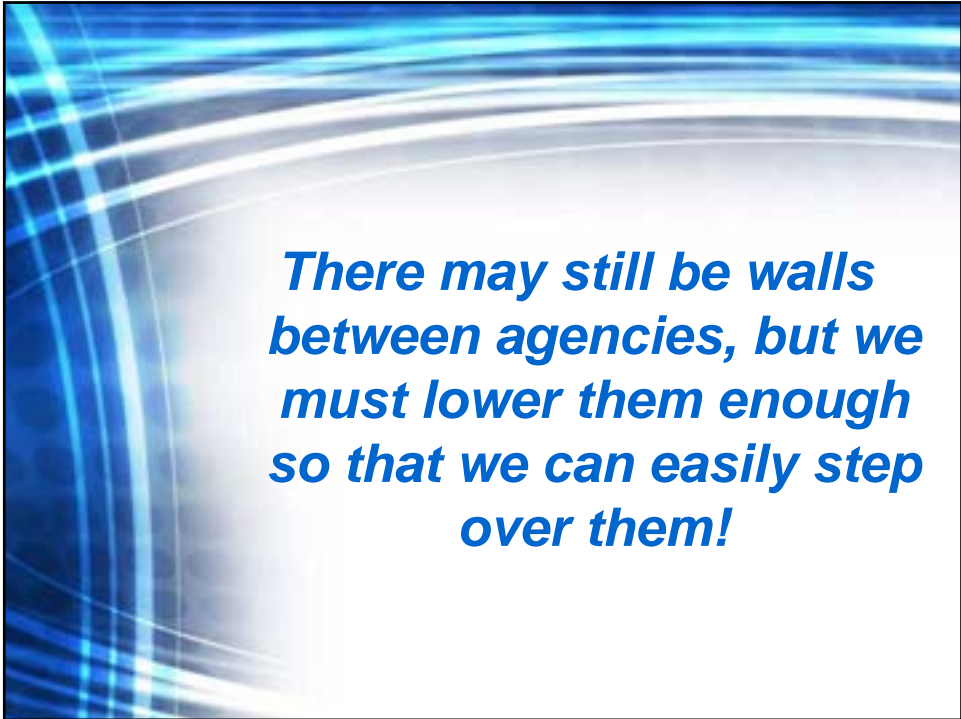
Who should be on your planning team?



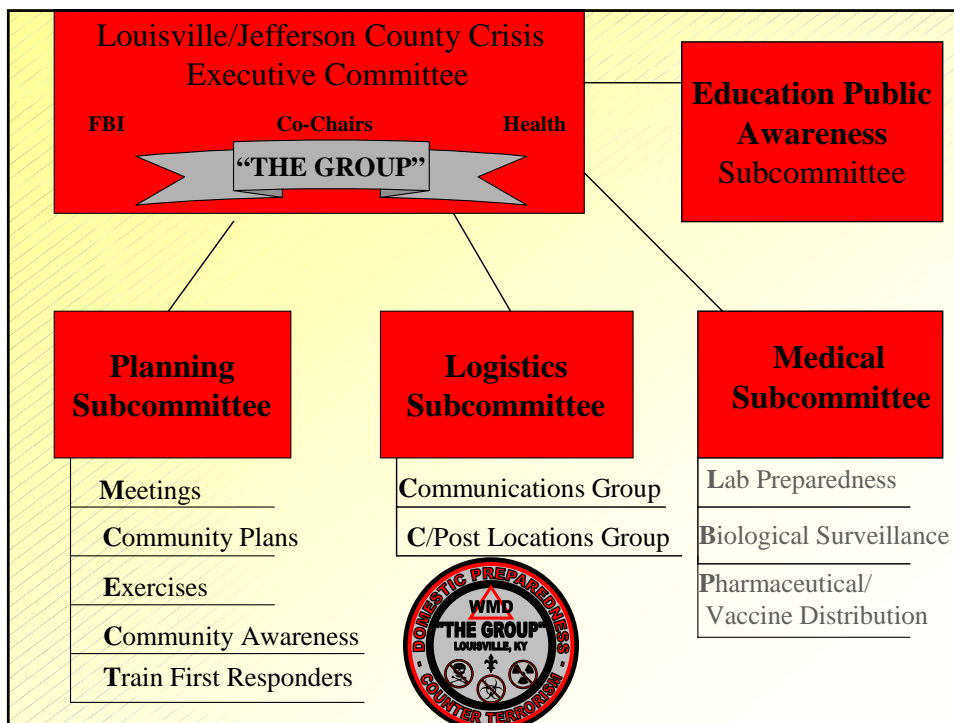


How Do YOU Put Together a "Group"?

- Identify several key players in the emergency response community.
- Contact your FBI WMD coordinator.
- Find that someone that "knows everybody".
- Spring for some REFRESHMENTS
- Start small and it will grow.
- Plan some attainable successes.



There may still be walls between agencies, but we must lower them enough so that we can easily step over them!



Group Local Partners

- Louisville Metro Police Department
- Louisville Metro Fire/ Rescue
- Louisville Metro Emergency Management Agency
- Louisville Metro Public Works
- Louisville Crime Commission
- Louisville Metro Health Department
- Louisville Metropolitan Sewer District (MSD)
- Jefferson County Sheriff's Office
- Jefferson County Coroner
- Suburban Fire Service
- Louisville Metro EMS
- Jefferson County Public Schools

Group Local Partners

- Transportation Security Agency---LIA @ SDF
- LIA @ SDF Police /Fire & Rescue
- Louisville Gas and Electric
- Louisville Water Company
- Bell South Telephone
- Louisville Metropolitan Sewer District
- United Parcel Service
- Transit Authority of River City (TARC)
- 14 Area Hospitals
- U of L Department of Emergency medicine
- U of L Department of Pathology
- U of L Technical Resource Center



Group State Partners

- KY Air National Guard
- KY Army National Guard
- 41st CST Team of Kentucky
- KY Division of Emergency Management
- KY State Police
- KY Medical Examiner
- KY Hospital Association
- KY Department of Corrections
- KY Department of Public Health
- KY Office of Homeland Security
- Office of Chief Medical Examiner



Group Federal Partners

- Federal Bureau of Investigation—FBI KY
- Bureau of Alcohol, Tobacco and Firearms
- U.S. Marshal Service
- U.S. Attorney's Office (WDKY)
- U.S. Secret Service
- U.S. Postal Inspector
- U.S. Postal Service
- U.S. Coast Guard
- U.S. Army Corps of Engineers
- U.S. Environmental Protection Agency
- Federal Protection Agency



THANK YOU!

Bill Wetter

Louisville Metro Health Department

810 Barrett Avenue, 659

Louisville, KY. 40204

U.S.A.

(502)574-6648

bill.wetter@louisvilleky.gov