

American Fire & Emergency Services In the Beginning.....

- 1676 Boston bought a pumper from London and hired 13 firefighters
- 1735-36 Benjamin Franklin started the first volunteer fire company in Philadelphia with 30 members

American Fire & Emergency Service Today....

- 50 Separate State Training Directors with their own state fire training standards
- NFPA Prof. Qualification standard series
- 30,400 fire departments
- 1,100,750 firefighters
 - 27% career (305,150)
 - 73% volunteers (795,600)

American Fire & Emergency Service

- 75% of the career firefighters work in cities of 25,000 or greater population.
- 95% of the volunteers protect cities of less than 25,000 people
- More than half the volunteers protect towns of less than 2500 people

American Fire & Emergency Service

- Vastly different in training, capability and equipment
- Many rural volunteer fire departments have a dozen or fewer members
- FDNY (America's largest)
 - 11,400 firefighters and officers
 - 2,800 EMT's, Paramedics and EMS Supervisors
 - 1200 civilian employees

American Fire & Emergency Service

- The American Fire Service is so slow to change that some fire instructors have described our service as 300 years of rich traditions unimpeded by progress!

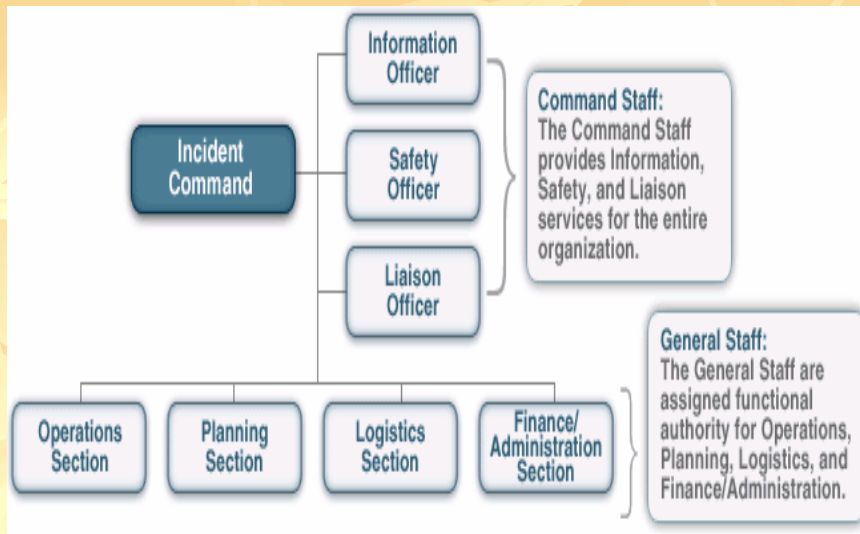


History of the U.S. Fire Service Incident Command System in the 1970's

From its inception in Southern California as a tool for managing complex multi-agency wildfires, the Incident Command System is now an integral part of the National Incident Management System (NIMS) mandated by the United States federal government for use at all emergency incidents.

Congress & The President mandate NIMS

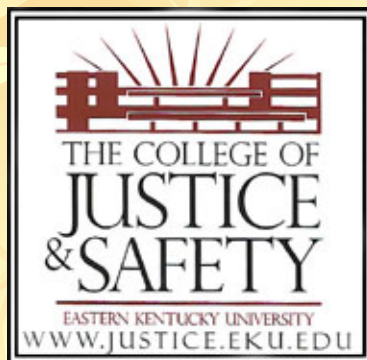
Following the tragic events of September 11, 2001, the President of the United States and The Secretary of the Department of Homeland Security announced the establishment of NIMS in March 2004. One of the most important features of NIMS is the Incident Command System.



Wildland ICS vs. NIMS ICS

Although the principles and concepts of NIMS ICS are the same as the NIMS ICS, one major exception deals with the way the intelligence function is handled. The NIMS incident commander has **flexibility in where to assign the intelligence and information function**, e.g., command staff or operations.

Contact information



Larry Collins, Ed.D.

Academic Chair,
Department of Loss
Prevention and Safety,
Eastern Ky. University
250 Stratton Bldg.
Richmond, KY 40475

or

Larry.Collins@eku.edu
859-622-1009



Associate's Curriculum

A result of the 2000 FESHE conference was the development of the model fire science associates curriculum. The FESHE attendees identified six core associate-level courses in the model curriculum, including:

- Building Construction for Fire Protection
- Fire Behavior and Combustion
- Fire Prevention
- Fire Protection Hydraulics and Water Supply
- Fire Protection Systems
- Principles of Emergency Services

