

**First Nordic-American Expert Public Safety
Symposium
11-12 October 2006
Copenhagen, Denmark**

MAKING COMMUNITIES SAFER

Technology Issues

”WCU”



WCU

“We See You” – a command and control system for crisis management



Michael Marklund



What is WCU?

**Software for communication
and information sharing
between different:**

- Command & Control levels
- Locations
- Organizations



What is WCU?

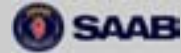
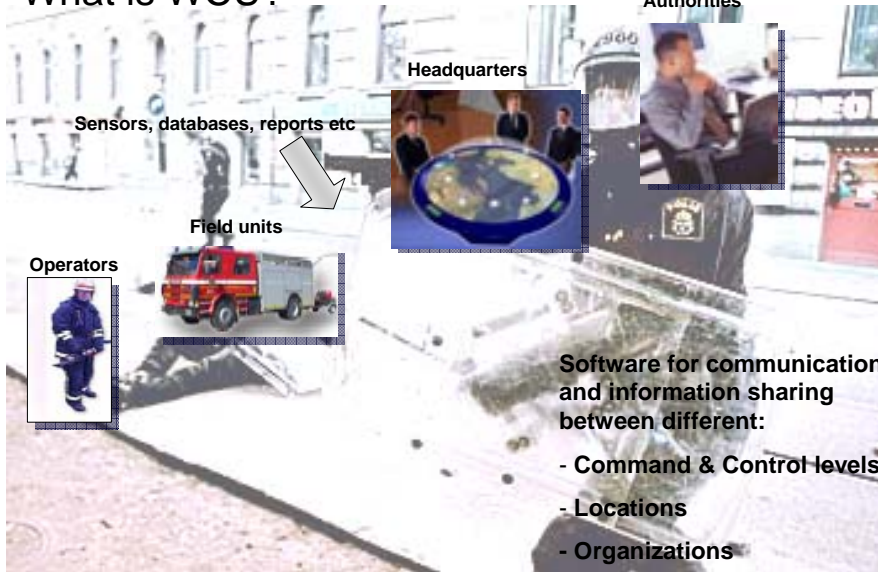


**Software for communication
and information sharing
between different:**

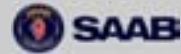
- Command & Control levels
- Locations
- Organizations

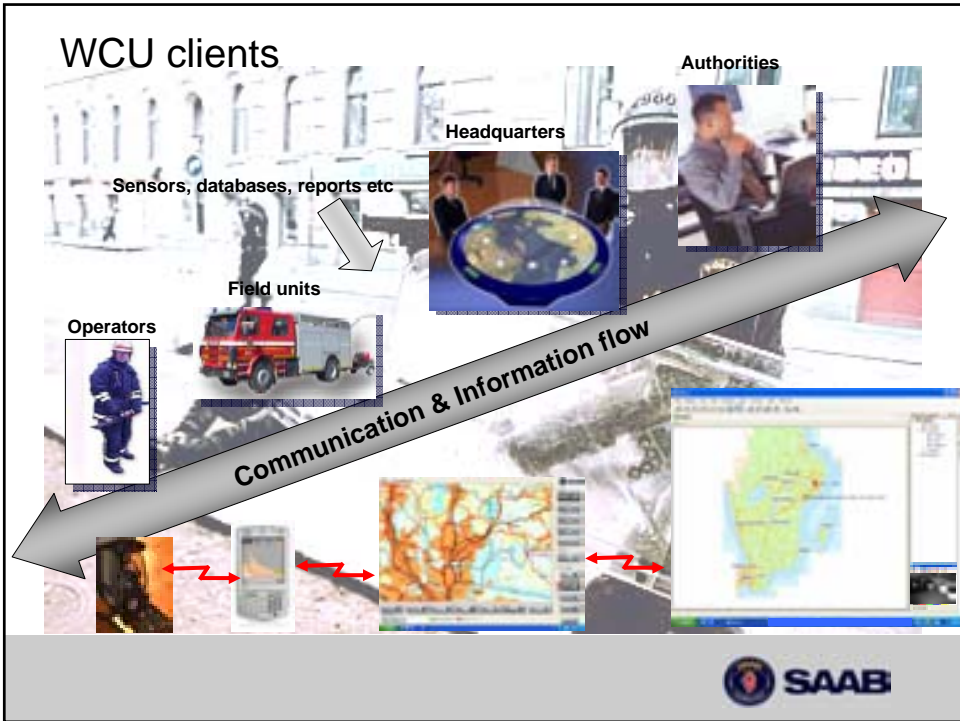


What is WCU?



What is WCU?





WCU functions

Basic:

- Situation Picture
- Communication
- Information

Extras:

- Sensor control
- Navigation
- Speech recogn.
- More...



WCU Requirements



If not used daily it will not be used in a crisis!

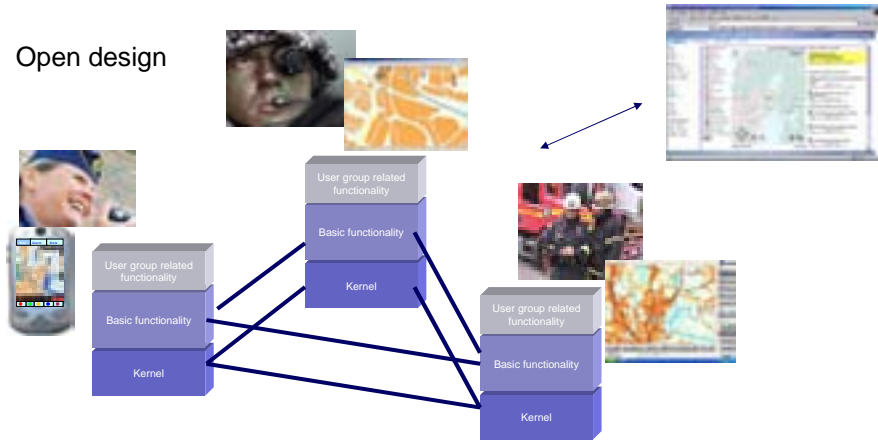
If no advantage of using it why use it?

If no possibility to share information how to co-operate?

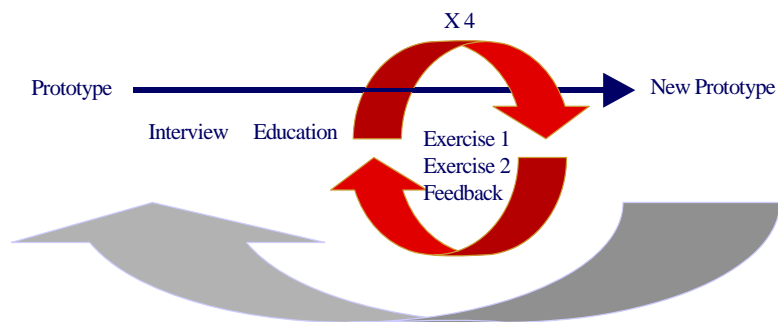


WCU architecture

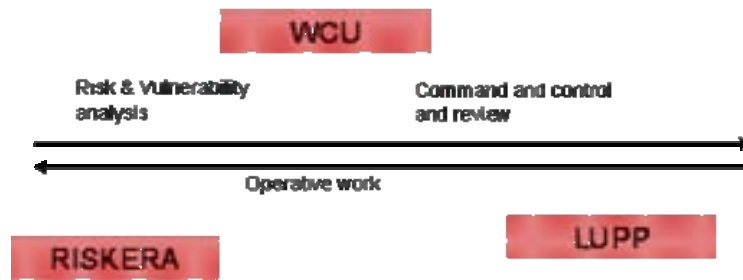
Open design



WCU design process



WCU integrated solution (SRV)

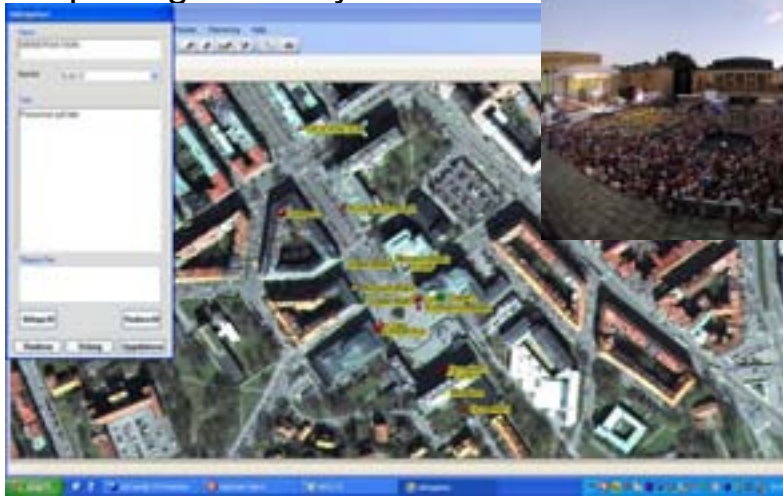


WCU –in use

- Sweden
 - Rescue services School at Sandö
 - Rescue services at North Stockholm
 - Arlanda Airport security
 - Police Swat team
- South Africa (Disaster Management)
 - Eastern Cape Pilot
 - National roll out



European Athletic championship - opening ceremony



Exercise scenario



Incident: Flooding at the Saab parking lot

Actors: incident commander, fire unit, and ambulance

C2 system: WCU



Exersice events

- Acknowledge alarm (from LUPP)
- Send status
- Move to flooded area
- Mark flooded area
- Send picture over flooded area
- Return to base

